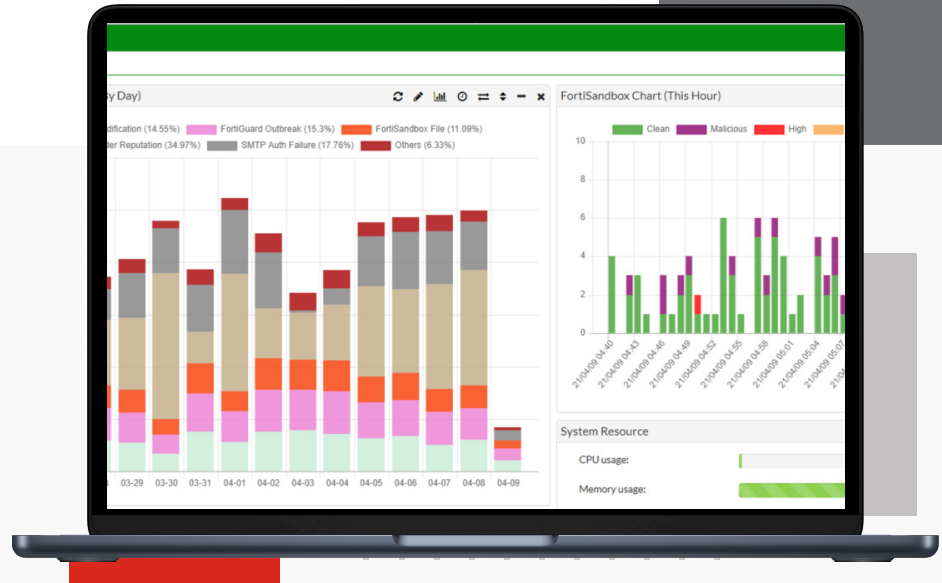


# FortiMail™ For Email Security



## Highlights

- Protection against email-borne threats
- Validated performance
- Fabric-enabled email security
- Powered by FortiGuard Labs

## Powerful, Scalable Email Security Protection Available in an Array of Deployment Models

With best-in-class performance validated by independent testing firms, FortiMail delivers advanced multi-layered protection against the full spectrum of email-borne threats. Powered by FortiGuard Labs threat intelligence and integrated into the Fortinet Security Fabric, FortiMail helps your organization prevent, detect, and respond to email-based threats including spam, phishing, malware, zero-day threats, impersonation, and Business Email Compromise (BEC) attacks

## Features



### Protection Against Email-borne Threats

Powerful anti-spam and anti-malware are complemented by advanced techniques like outbreak protection, content disarm and reconstruction, sandbox analysis, impersonation detection, and other technologies to stop unwanted bulk email, phishing, ransomware, business email compromise, and targeted attacks.



### Validated Performance

Fortinet is one of the only email security vendors to consistently prove the efficacy of FortiMail through independent testing. FortiMail earned a 99.99% Spam Catch Rate from Virus Bulletin.



### Fabric-enabled Email Security

FortiMail is integrated with Fortinet products as well as third-party components help you adopt a proactive approach to security by sharing IoCs across a seamless Security Fabric. It also enables advanced and complementary email security protection for Microsoft 365 and Google Gsuite Cloud email through API-level integration.



### Powered by FortiGuard Labs

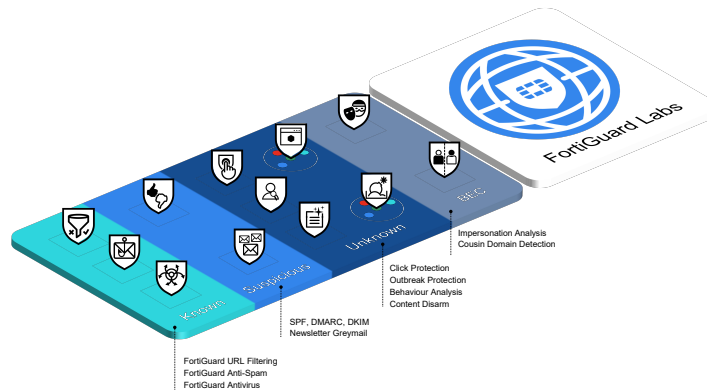
Fortinet FortiMail is powered by threat intelligence and FortiGuard AI-powered Security Services like antivirus, virus outbreak protection, and antispam, from FortiGuard Labs. With visibility across 600,000 customer environments worldwide, FortiGuard Labs is one of the preeminent threat research teams in existence.

## Features



### Proactive Email Security

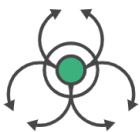
FortiMail addresses the full spectrum of risks that email poses to organizations, fortified by FortiGuard Labs' global visibility and intelligence on the latest threats.



### Multi-Layered Anti-Spam

Multiple sender, protocol and content inspection techniques shield users from spam and junk mail. Using a combination of reputation analysis, connection filtering, authentication and recipient verification methods allows for fast and accurate email protection. Checks include IP, domain, sender, SPF, DKIM, DMARC and geographical restrictions.

Finally, message structure and content are analyzed based on the digital signature, keywords in context, image analysis, embedded URIs, and more advanced techniques such as behavior analysis and spam outbreak protection. Working together, these techniques consistently identify and block a verified 99.99% of spam in real-world conditions.



### Powerful Anti-Malware

Combining multiple static and dynamic technologies that include signature, heuristic, and behavioral techniques along with virus outbreak prevention, FortiMail protects against a wide range of constantly evolving threats.



### Advanced Threat Protection (ATP)

For an even stronger defense against the very latest threat classes like business email compromise and targeted attacks, FortiMail offers optional content disarm and reconstruction, sandbox analysis, sophisticated spoof detection, and more.



### Integrated Data Loss Prevention

A robust set of capabilities for data loss prevention and email encryption safely deliver sensitive emails and protect against the inadvertent loss of data. These features facilitate compliance with corporate policies and industry regulations.



### Intuitive Controls

Real-time dashboards, rich reporting, centralized quarantine and simple to use end-user controls allow organizations to get running and realize value quickly. An intuitive user interface combined with flexible MTA and mail-handling capabilities give full visibility and control over email traffic.



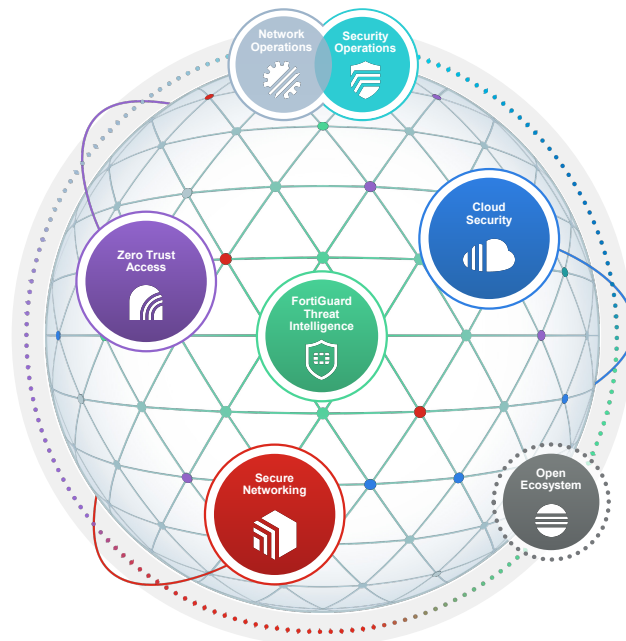
## Features



### Integration with the Fortinet Security Fabric

The future of email security is platform- or fabric-enabled to counter the growing sophistication of threats and multi-vector campaigns. As part of the Fortinet Security Fabric, Indicators of Compromise and other telemetry can be shared for enhanced security across your entire security infrastructure.

IT and security teams are able to more completely connect the dots to identify multi-vector campaigns by sophisticated actors. In addition, intensive and repetitive workflows including response can be automated to reduce the burden on security operations teams.



### Industry Recognized, Top-Rated Performance

FortiMail delivers superior performance as measured by independent third-party testers.



99.99%  
Spam Catch Rate



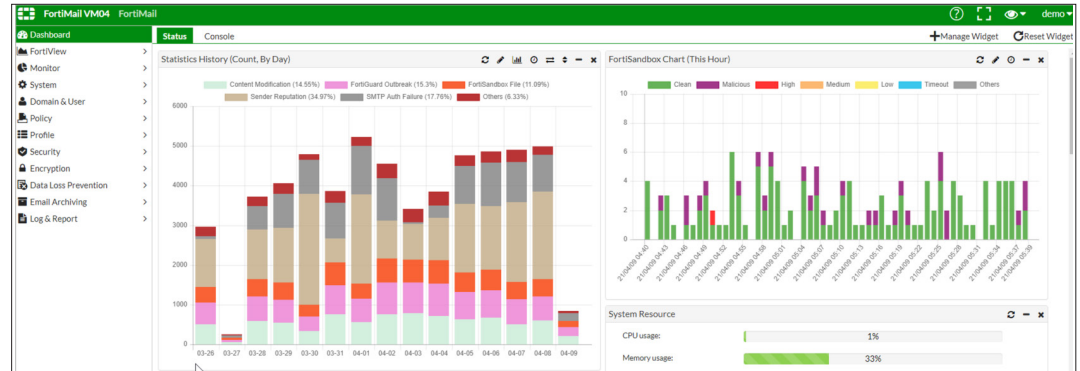
100%  
Malware Detected



# Features

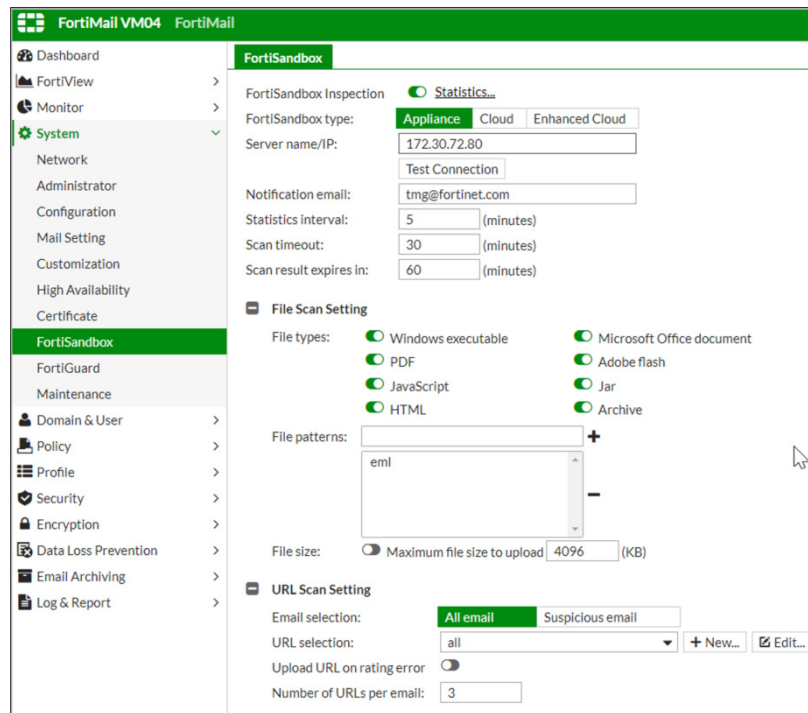
## Intuitive Email Management

Real-time dashboards, rich reporting, centralized quarantines, and end user controls along with full MTA and mail-handling capabilities provide organizations full visibility and easy control over email traffic.



## Easy-to-Use Configuration

Easy-to-use configuration controls make setting up and managing email security – even advanced security capabilities – easy for organizations of all sizes and use cases



## Hands on or hands off?

### Which FortiMail solution is best for you?

#### We want full control.

Virtual Machines and appliances for teams who want total control over their infrastructure and email security.

#### Manage it for us.

Email security as a service for teams who just want to focus on monitoring and responding to email threats. Fortinet handles the infrastructure.

[Read the FortiMail Cloud data sheet >](#)

## Features

### High Performance, Flexible Deployment

Scale easily to handle millions of messages per hour. Serving organizations of all sizes, Fortinet provides a wide range of deployment models and operation modes to best match your organization's email security needs.

### Deployment Models

#### Appliances and Virtual Machines

FortiMail appliances and virtual machines are for organizations that prefer full control and management over their email security infrastructure for on-premise and cloud use cases.

- Appliances for on-premise environments
- Virtual machines for running on:
  - Popular hypervisor platforms including:
    - VMWare
    - Citrix XenServer
    - Hyper-V
    - KVM
  - Major cloud platforms:
    - AWS
    - Azure
    - Google Cloud
    - Oracle
    - AliCloud

#### FortiMail Cloud

FortiMail Cloud for organizations that want simple, easy-to-use email security as-a-service for both on-premise and cloud-based email services.

### Operation Modes

#### Gateway Mode

Provides inbound and outbound proxy mail transfer agent (MTA) services for existing email gateways. A simple DNS MX record change redirects email to FortiMail for analysis. FortiMail then relays safe email to its destination email server for delivery.

#### Microsoft and Google Cloud Email API Integration

FortiMail can be deployed out of line to simplify deployment, so no MX record change is required, and leverage the native Microsoft and Google APIs to deliver threat detection and post-delivery message clawback. Broad flexibility is possible with clawback to create policies that address compliance or unique business requirements, such as building search parameters based on keywords, file name, or content type. These capabilities can serve as powerful complements to native Microsoft and Google security features to bolster overall efficacy and reduce risk.

#### Transparent Mode

Transparent mode eliminates the need to change the DNS MX record, or to change the existing email server network configuration. Transparent mode is particularly appealing for service providers that want to extend email security services to their customer bases. Not available with FortiMail Cloud.

#### Server Mode

The FortiMail device acts as a standalone messaging server with full SMTP email server functionality, including flexible support for secure POP3, IMAP, and WebMail access.



## Feature Bundles

We want full control.

Feature	Base Bundle	Enterprise Advanced Threat Protection Bundle	Ent. ATP with Cloud Email API Support Bundle
99.99% Spam Capture Rate	✓	✓	✓
Advanced Multi-Layer Malware Detection	✓	✓	✓
Inbound and Outbound Filtering	✓	✓	✓
Integration with Customer LDAP	✓	✓	✓
Secure Message Delivery (TLS)	✓	✓	✓
Message Tracking	✓	✓	✓
Virus Outbreak Service	✓	✓	✓
Identity-Based Encryption (IBE)	✓	✓	✓
Reporting	✓	✓	✓
Email Data Loss Prevention	✓	✓	✓
Content Disarm and Reconstruction		✓	✓
URL Click Protection		✓	✓
Impersonation Analysis		✓	✓
Cloud Sandboxing		✓	✓
Real-time Scanning of Microsoft and Google Mailboxes			✓
Scheduled Scanning of Microsoft and Google Mailboxes			✓
Post-delivery Clawback of Newly Discovered Email Threats			✓

## Additional Add-on Capabilities



### Email Continuity

Email Continuity for FortiMail Cloud is designed to protect valuable productivity by providing emergency mailbox services when organizations experience an outage of their email services.



### Dynamic Image Analysis Service

Protects your organization and employees against inappropriate and sexually explicit images.

## Integrations with Fortinet Solutions



FortiAnalyzer



FortiSandbox



FortiSandbox Cloud



FortiSOAR



FortiAnalyzer Cloud



FortiNDR



FortiSIEM



# Features Summary

## SYSTEM

Wide range of deployment and operation options  
 – On-premise or public or private cloud deployment  
 – Gateway, Microsoft and Google API connectors, Transparent, and Server Mode

Inbound and Outbound Inspection

Support for multiple email domains with per-domain customization  
 – MSSP multi-tenant support with white label support  
 – Multi-tier administration

IPv4 and IPv6 Address Support

Virtual Hosting using Source and/or Destination IP Address Pools

SMTP Authentication Support via LDAP, RADIUS, POP3 and IMAP

LDAP-Based Email Routing

Per User Inspection using LDAP Attributes on a Per Policy (Domain) Basis

Geographic IP location-based policy

Comprehensive Webmail Interface for Server Mode Deployments and Quarantine Management

Mail Queue Management

Multiple Language Support for Webmail and Admin Interface

SMTP RFC Compliance

Modern HTML 5 GUI

Independently tested by SELabs, and Virus Bulletin

Compatibility with cloud services e.g. Microsoft 365, Google Workspace, Amazon AWS, and Microsoft Azure

DNS-based Authentication of Named Entities (DANE) support

## ANTISPAM

FortiGuard Antispam Service  
 – Sender and domain reputation  
 – Spam and attachment signatures  
 – Dynamic heuristic rules  
 – Outbreak protection

Full FortiGuard URL Category Filtering includes  
 – Spam, malware and phishing URLs  
 – Pornographic and adult URLs  
 – Newly registered domains

Greylisting for IPv4, IPv6 addresses and email accounts

Local sender reputation (IPv4, IPv6 and End Point ID-based)

Behavioral analysis

Integration with third-party spam URI and real-time blacklists (SURBL/RBL)

Newsletter (grey) and suspicious newsletter detection

PDF Scanning and image analysis

Block/safe lists at global, domain, and user levels

Support for enterprise sender identity standards  
 – Sender Policy Framework (SPF)  
 – Domain Keys Identified Mail (DKIM)  
 – Domain-Based Message Authentication (DMARC)

Flexible action and notification profiles

Multiple system and per-user self-service quarantines

## TARGETED ATTACK PROTECTION

Content Disarm and Reconstruction  
 – Neutralize Office and PDF documents (remove macros, active content, attachments, and more)  
 – Neutralize email HTML content by removing hyperlinks / rewrite URLs

Business Email Compromise (BEC)  
 – Multi-level anti-spoof protection  
 – Impersonation analysis — manual and automatic address impersonation detection  
 – Cousin domain detection

URL Click Protect to rewrite URLs and rescan on access

Integration with Fortisolator Browser Isolation platform to neutralize browser-based threats

## API INTEGRATION

Microsoft 365 and Google Gsuite Email Integration  
 – Post-delivery threat clawback  
 – Scheduled scan  
 – Real-time scanning  
 – Internal mail scanning

## CONTENT DETECTION

FortiGuard Antivirus Service detection  
 – CPRL signature checking  
 – Heuristic based behavioral detection  
 – Greyware detection

FortiGuard Virus Outbreak Protection Service  
 – Global threat intelligence and data analytics

Active content detection (PDF & Office Documents)

Rescan for threats on quarantine release

Custom file hash checking

Mime and file type detection

Comprehensive data-loss prevention with file fingerprinting and sensitive data detection  
 – Automatic Windows fileshare and manual upload file fingerprinting  
 – Healthcare, Finance, personally identifiable information and profanity detection

Automatic decryption of Archives, PDF and Office Documents using built-in and administrator-defined password lists and word detection within email body

PDF Scanning and image analysis

Dynamic Image Analysis Service  
 – Identify and report on illicit and sexually explicit content

## ENCRYPTION

Comprehensive encryption support  
 – Server to server TLS with granular ciphersuite control and optional enforcement  
 – S/MIME  
 – Clientless encryption to the recipient desktop using Identity Based Encryption (IBE)  
 – Optional Outlook plugin to trigger Identity Based Encryption (IBE)

## MANAGEMENT, LOGGING, AND REPORTING

Basic/advanced management modes

Per domain, role-based administration accounts

Comprehensive activity, configurations change and incident logging and reporting

Built-in reporting module

Detailed message tracking

Centralized quarantine for large scale deployments

Optional centralized logging and reporting with FortiAnalyzer

SNMP support using standard and private MIB with threshold-based traps

Local or external storage server support, including iSCSI devices

External Syslog support

Open REST API for configuration and management

## HIGH AVAILABILITY (HA)

High availability supported in all deployment scenarios  
 – Active-Passive mode  
 – Active-Active configuration synchronization mode

Quarantine and mail queue synchronization

Device failure detection and notification

Link status, failover and redundant interface support

## ADVANCED

Policy-based e-mail archiving with remote storage options  
 – Support for Exchange journal archiving

Advanced Email Server feature set including  
 – Comprehensive webmail interface  
 – POP3, IMAP mail access  
 – Calendaring functions  
 – Undo Send

SAML 2.0 SSO and ADFS integration for webmail and quarantine access

## SUPPORT

Simple support options with inclusive bundles

Advanced RMA Support

Professional services and installation support options





# Specifications

	FORTIMAIL 200F	FortiMail 400F	FortiMail 900F
<b>Recommended Deployment Scenarios</b>			
	Small businesses, branch offices, and organizations	Small to mid-sized organizations	Mid to large enterprise, education, and government departments
<b>Hardware Specifications</b>			
10/100/1000 Interfaces (Copper, RJ45)	4	4	4
SFP Gigabit Ethernet Interface	—	—	2
SFP+ 10 Gigabit Ethernet Interface	—	—	—
Redundant Hot Swappable Power Supplies	—	—	☑
Storage	1× 1TB	2× 1 TB	2× 2 TB (2× 2 TB Optional)
RAID Storage Management	—	Software 0, 1	Hardware 0, 1, 5, 10, Hot Spare (Based on Drive Count)
Form Factor	Rack Mount, 1U	Rack Mount, 1U	Rack Mount, 1U
Trusted Platform Module (TPM)	☑	☑	☑
Power Supply	Single	Single (Dual Optional)	Dual
<b>System Specifications</b>			
Protected Email Domains*	20	70	500
Recipient-based Policies (per Domain / per System) — Incoming or Outgoing	60 / 300	400 / 1500	600 / 2000
Server Mode local mailboxes	150	400	1500
Antispam, Antivirus, Authentication, and Content Profiles (per Domain / per System)	50 / 60	50 / 200	50 / 400
Data Loss Prevention	—	☑	☑
Centralized Quarantine	—	☑	☑
Microsoft 365 and Google Gsuite Email API Integration	—	Optional	Optional
<b>Performance (Messages/Hour) [Without queuing based on 100 KB message size]</b>			
Email Routing (per hour)**	50 K	250 K	800 K
FortiGuard Antispam + Virus Outbreak (per hour)**	40 K	200 K	500 K
FortiGuard Enterprise ATP (per hour)**	30 K	150 K	400 K
<b>Cloud API Performance (Messages/Hour) [Without queuing based on 100 KB message size]</b>			
Email Routing (per hour)**	18 K	83 K	241 K
FortiGuard Antispam + Virus Outbreak (per hour)**	14 K	72 K	170 K
FortiGuard Enterprise ATP (per hour)**	12 K	58 K	148 K
<b>Dimensions</b>			
Height x Width x Length (inches)	1.73 × 17.24 × 16.61	1.73 × 17.24 × 16.38	1.75 × 17.00 × 27.61
Height x Width x Length (mm)	44 × 438 × 422	44 × 438 × 416	44 × 438 × 701
Weight	11.9 lbs (5.4 kg)	25.0 lbs (11.0kg)	33.1 lbs (15.00 kg)
<b>Environment</b>			
Power Source	100–240V AC, 50–60 Hz	100–240V AC, 50–60 Hz	100–240V AC, 50–60 Hz
Maximum Current	100V / 3A, 240V / 1.5A	100V / 5A, 240V / 3A	100V / 5A, 240V / 2.5A
Maximum Power Required	62 W	113 W	190 W
Power Consumption (Average)	51 W	77 W	174 W
Heat Dissipation	245 BTU/h	418 BTU/h	681 BTU/h
Forced Airflow	Front to back	Front to back	Front to back
Humidity	5% to 90% non-condensing	5% to 90% non-condensing	5% to 90% non-condensing
Operating Temperature	32°F to 104°F (0°C to 40°C)	32°F to 104°F (0°C to 40°C)	32°F to 104°F (0°C to 40°C)
Storage Temperature	-4°F to 158°F (-20°C to 70°C)	-4°F to 158°F (-20°C to 70°C)	-4°F to 158°F (-20°C to 70°C)
<b>Compliance</b>			
	FCC Part 15 Class A, RCM, VCCI, CE, UL/cUL, CB, RoHS	FCC Part 15 Class A, RCM, VCCI, CE, UL/cUL, CB, BSMI, RoHS	FCC Part 15 Class A, RCM, VCCI, CE, UL/cUL, CB, BSMI, RoHS
<b>Certification</b>			
	VBSpam and VB100 rated. Common Criteria evaluation in process (NIAP). NIST CMVP Implementation under test (FIPS140-3).		

\* Protected Email Domains is the total number of email domains that can be configured on the appliance. Domain Associations can be used to enable additional domains which share configuration with the primary domain to which they are assigned. Advanced management license increases the protected domain limit by 50%.

\*\* Tested using FortiMail 7.0



# Specifications

	FORTIMAIL 2000F	FORTIMAIL 3000F
<b>Recommended Deployment Scenarios</b>		
	Large enterprise, education, and government departments	Highest performing appliance for the largest corporate, university, ISP, and carriers
<b>Hardware Specifications</b>		
10/100/1000 Interfaces (Copper, RJ45)	4	4
SFP Gigabit Ethernet Interface	2	2
SFP+ 10 Gigabit Ethernet Interface	—	2
Redundant Hot Swappable Power Supplies	☑	☑
Storage	2× 2 TB SAS (6× 2 TB Optional)	2× 2 TB (10× 2 TB Optional)
RAID Storage Management	Hardware; 1, 5, 10, 50, Hot Spare (Based on drive count)	Hardware; 1, 5, 10, 50, Hot Spare (Based on drive count)
Form Factor	Rack Mount, 2U	Rack Mount, 2U
Trusted Platform Module (TPM)	☑	☑
Power Supply	Dual	Dual
<b>System Specification</b>		
Protected Email Domains*	1000	2000
Recipient-Based Policies (per Domain / per System) — Incoming or Outgoing	800 / 3000	1500 / 7500
Server Mode local mailboxes	2000	3000
Antispam, Antivirus, Authentication, and Content Profiles (per Domain / per System)	50 / 400	50 / 600
Data Loss Prevention	☑	☑
Centralized Quarantine	☑	☑
Microsoft 365 and Google Gsuite Email API Integration	Optional	Optional
<b>Performance (Messages/Hour) [Without queuing based on 100 KB message size]</b>		
Email Routing (per hour)**	1.6 Million	3.5 Million
FortiGuard Antispam + Virus Outbreak (per hour)**	1.1 Million	2.6 Million
FortiGuard Enterprise ATP (per hour)**	800 K	2.1 Million
<b>Cloud API Performance (Messages/Hour) [Without queuing based on 100 KB message size]</b>		
Email Routing (per hour)**	372 K	705 K
FortiGuard Antispam + Virus Outbreak (per hour)**	280 K	560 K
FortiGuard Enterprise ATP (per hour)**	233 K	465 K
<b>Dimensions</b>		
Height x Width x Length (inches)	3.5 × 17.2 × 25.5	3.5 × 17.2 × 25.5
Height x Width x Length (mm)	89 × 437 × 647	89 × 437 × 647
Weight	32 lbs (14.5 kg)	40.0 lbs (18.2 kg)
<b>Environment</b>		
Power Source	100–240V AC, 50–60 Hz	100–240V AC, 50–60 Hz
Maximum Current	10.0A / 110V, 3.5A / 240V	9.8A / 110V, 4.9A / 220V
Maximum Power Required	219 W	379 W
Power Consumption (Average)	189 W	348 W
Heat Dissipation	781 BTU/h	1325 BTU/h
Forced Airflow	Front to back	Front to back
Humidity	8% to 90% non-condensing	8% to 90% non-condensing
Operating Temperature	41°F to 95°F (5°C to 35°C)	50°F to 95°F (10°C to 35°C)
Storage Temperature	-40°F to 140°F (-40°C to 60°C)	-40°F to 158°F (-40°C to 70°C)
<b>Compliance</b>		
	FCC Part 15 Class A, RCM, VCCI, CE, UL/cUL, CB, BSMI, RoHS	FCC Part 15 Class A, RCM, VCCI, CE, UL/cUL, CB, BSMI, RoHS
<b>Certification</b>		
	VBSpm and VB100 rated. Common Criteria evaluation in process (NIAP). NIST CMVP Implementation under test (FIPS140-3).	

\* Protected Email Domains is the total number of email domains that can be configured on the appliance. Domain Associations can be used to enable additional domains which share configuration with the primary domain to which they are assigned. Advanced management license increases the protected domain limit by 50%.

\*\* Tested using FortiMail 7.0



# Specifications

Technical Specifications for FortiMail Virtual Appliances	VM01	VM02	VM04	VM08	VM16	VM32
<b>Recommended Deployment Scenarios *</b>	Small businesses, branch offices, and organizations	Small to midsized organizations	Mid to large enterprise	Large enterprise	Large enterprise	Large enterprise
<b>Technical Specifications</b>						
<b>Hypervisors Supported</b>	VMWare ESX/ESXi 6.0 and later, Citrix XenServer v5.6 SP2/6.0 and later, Microsoft Hyper-V Server 2008 R2/2012/2012 R2/2016/2019, KVM qemu 2.12.1 and later, AWS (Amazon Web Services), Nutanix AHV**, Microsoft Azure, Google Cloud Platform, Oracle Cloud Infrastructure***					
<b>Maximum Virtual CPUs Supported</b>	1	2	4	8	16	32
<b>Virtual NICs Required (Minimum/Maximum)</b>	1 / 4	1 / 4	1 / 6	1 / 6	1 / 6	1 / 6
<b>Virtual Machine Storage Required (Minimum/Maximum) ****</b>	250 GB / 1 TB	250 GB / 2 TB	250 GB / 4 TB	250 GB / 8 TB	250 GB / 12 TB	250 GB / 24 TB
<b>Virtual Machine Memory Required (Minimum/Maximum)</b>	2 GB / 4 GB	2 GB / 8 GB	4 GB / 16 GB	4 GB / 64 GB	4 GB / 128 GB	4 GB / 128 GB
<b>Performance (Messages/Hour) [Without queuing based on 100 KB message size] *****</b>						
<b>Email Routing (per hour) **</b>	34 K	67 K	306 K	675 K	875 K	1.2 M
<b>FortiGuard Antispam + Virus Outbreak (per hour) **</b>	30 K	54 K	279 K	630 K	817 K	1.1 M
<b>FortiGuard Enterprise ATP (per hour) **</b>	26 K	52 K	225 K	585 K	758 K	1.0 M
<b>Cloud API Performance (Messages/Hour) [Without queuing based on 100 KB message size] *****</b>						
<b>Email Routing (per hour) **</b>	N/A	23 K	110 K	295 K	495 K	940 K
<b>FortiGuard Antispam + Virus Outbreak (per hour) **</b>	N/A	18 K	96 K	226 K	383 K	740 K
<b>FortiGuard Enterprise ATP (per hour) **</b>	N/A	16 K	75 K	197 K	311 K	620 K
<b>System Specifications</b>						
<b>Protected Email Domains *****</b>	20	70	500	1000	1500	2000
<b>Recipient-Based Policies (Domain / System) — Incoming or Outgoing</b>	60 / 300	400 / 1500	800 / 3000	800 / 3000	1500 / 7500	1500 / 7500
<b>Server Mode local mailboxes</b>	150	400	1500	2000	3000	3000
<b>Antispam, Antivirus, Authentication, and Content Profiles (per Domain / per System)</b>	50 / 60	50 / 200	50 / 400	50 / 400	50 / 600	50 / 600
<b>Data Loss Prevention</b>	—	☑	☑	☑	☑	☑
<b>Centralized Quarantine</b>	—	☑	☑	☑	☑	☑
<b>Microsoft 365 and Google Gsuite Email API Integration</b>	—	Optional	Optional	Optional	Optional	Optional
<b>Certification</b>	VBSpam and VB100 rated. Common Criteria evaluation in process (NIAP). NIST CMVP Implementation under test (FIPS140-3).					

\* Recommended sizing for Gateway and Transparent deployments. For Server Mode, see Server Mode Mailbox metric.

If unsure, please validate the model selection by checking the peak mail flow rates and average message size detail with a FortiMail specialist.

\*\* FortiMail 7.0.1 has been validated on Nutanix AHV 20201105.2096 and AOS 5.20.1.1.

\*\*\* Transparent mode deployment is not fully supported on Microsoft HyperV and cloud hypervisors due to limitations in the available network configurations.

\*\*\*\* For the initial VM setup, 250GB is required to install the default Fortinet OVF file. After deployment, the default OVF file can be deleted and the disk space set no less than 50 GB.

\*\*\*\*\* Hardware dependent. Indicative figures based on a VMWare 6.0 system utilizing 2x Intel Xeon E5-2620 v4 @ 2.10 GHz restricted to the specified number of cores.

\*\*\*\*\* Protected Email Domains is the total number of email domains that can be configured on the appliance.

Domain Associations can be used to enable additional domains which share configuration with the primary domain to which they are assigned.

Advanced management license increases the protected domain limit by 50%.



## Order Information

For information on ordering, please talk with your Fortinet account manager, or refer to the Ordering Guide for a full list of FortiMail-related SKUs and pricing information.

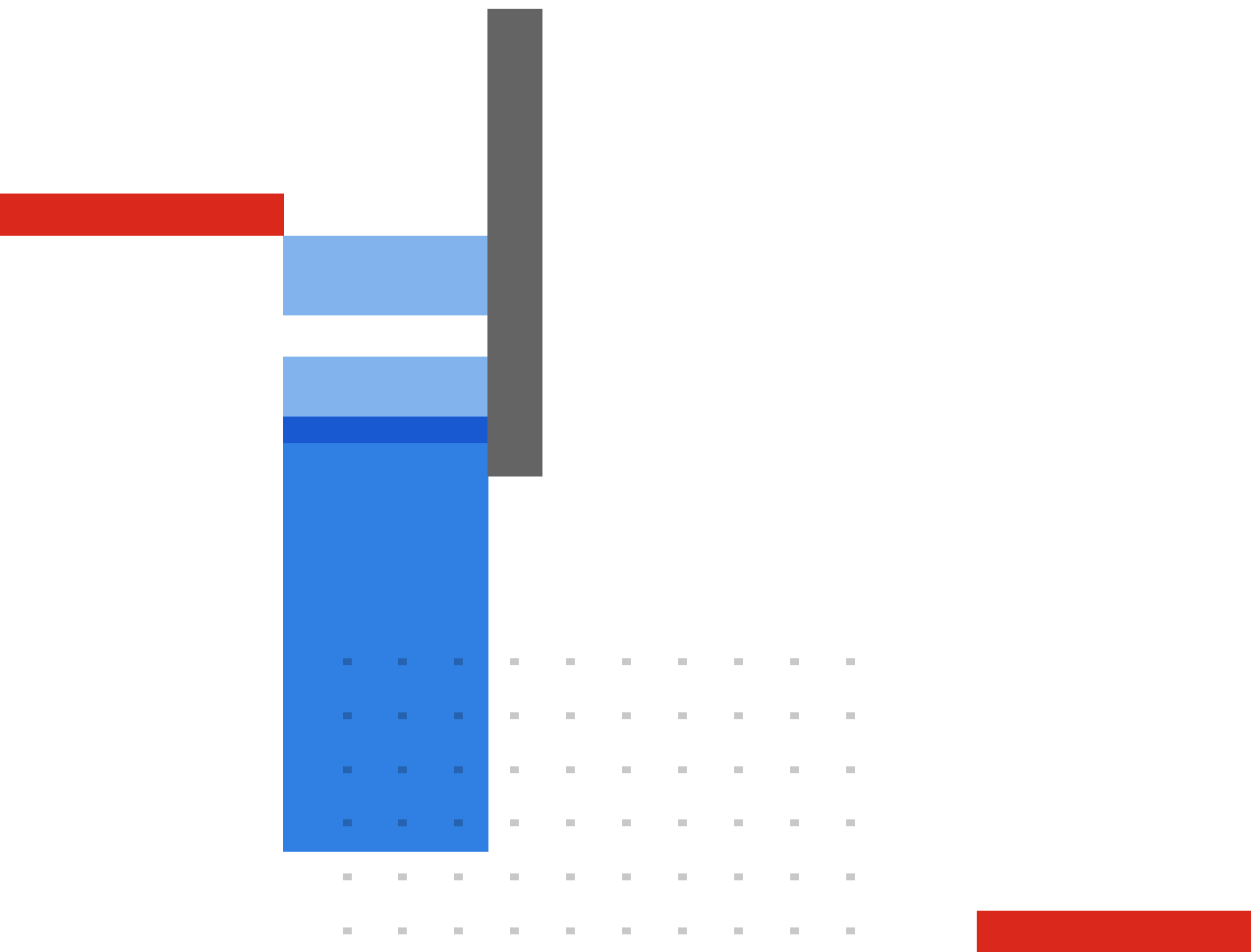
FortiMail Product	SKU	Description
<b>FortiMail 200F</b>	FML-200F	Email Security Appliance — 4x GE RJ45 ports, 1 TB storage
<b>FortiMail 400F</b>	FML-400F	Email Security Appliance — 4x GE RJ45 ports, 2 TB storage
<b>FortiMail 900F</b>	FML-900F	Email Security Appliance — 4x GE RJ45 ports, 2x GE SFP slots, dual AC power supplies, 4 TB default storage
<b>FortiMail 2000F</b>	FML-2000F	Email Security Appliance — 4x GE RJ45 ports, 2x GE SFP slots, dual AC power supplies, 4 TB default storage
<b>FortiMail 3000F</b>	FML-3000F	Email Security Appliance — 4x GE RJ45 ports, 2x 10 GE SFP+ slots, 2x GE SFP slots, dual AC power supplies, 4 TB default storage
<b>FortiMail VM</b>		
<b>FortiMail VM01</b>	FML-VM01	FortiMail-VM virtual appliance for VMware ESX/ESXi, Microsoft Hyper-V, Citrix XenServer and KVM virtualization platforms. 1x vCPU core
<b>FortiMail VM02</b>	FML-VM02	FortiMail-VM virtual appliance for VMware ESX/ESXi, Microsoft Hyper-V, Citrix XenServer and KVM virtualization platforms. 2x vCPU cores
<b>FortiMail VM04</b>	FML-VM04	FortiMail-VM virtual appliance for VMware ESX/ESXi, Microsoft Hyper-V, Citrix XenServer and KVM virtualization platforms. 4x vCPU cores
<b>FortiMail VM08</b>	FML-VM08	FortiMail-VM virtual appliance for VMware ESX/ESXi, Microsoft Hyper-V, Citrix XenServer and KVM virtualization platforms. 8x vCPU cores
<b>FortiMail VM16</b>	FML-VM16	FortiMail-VM virtual appliance for VMware ESX/ESXi, Microsoft Hyper-V, Citrix XenServer and KVM virtualization platforms. 16x vCPU cores
<b>FortiMail VM32</b>	FML-VM32	FortiMail-VM virtual appliance for VMware ESX/ESXi, Microsoft Hyper-V, Citrix XenServer and KVM virtualization platforms. 32x vCPU cores
<b>Accessories</b>		
<b>Power Supply</b>	SP-FAD700-PS	AC power supply for FML-400E
<b>Power Supply</b>	SP-FML900F-PS	AC power supply for FML-400F and FML-900F
<b>Power Supply</b>	SP-FML2000F-PS	AC power supply for FML-2000F
<b>Power Supply</b>	SP-FML3000F-PS	AC power supply for FML-3000F and FML-3200F
<b>Hard Drive</b>	SP-D2TE	2 TB 3.5" SAS hard drive with tray for FML-2000F, FML-3000F and FML-3200F
<b>Hard Drive</b>	SP-FML900F-HDD	2 TB 3.5" SATA hard drive with tray for FML-900F
<b>Service and Support</b>		
<b>Appliances - Hardware plus 24x7 FortiCare and FortiGuard Base Bundle</b>		
<b>Appliances - Hardware plus 24x7 FortiCare and FortiGuard Enterprise ATP Bundle</b>		
<b>Virtual Machines - 24x7 FortiCare and FortiGuard Base Bundle Contract</b>		
<b>Virtual Machines - 24x7 FortiCare and FortiGuard Enterprise ATP Bundle Contract</b>		
<b>Microsoft 365 and Google Gsuite Email API Integration Service</b>		
<b>Add-on Capabilities</b>		
<b>Dynamic Adult Image Analysis Service</b>		
<b>Email Continuity</b>		
<b>For Service Providers and Enterprises</b>		
<b>Advanced Administration License for MSSPs and Enterprises requiring multi-tenancy and additional features</b>		



---

## Fortinet Corporate Social Responsibility Policy

Fortinet is committed to driving progress and sustainability for all through cybersecurity, with respect for human rights and ethical business practices, making possible a digital world you can always trust. You represent and warrant to Fortinet that you will not use Fortinet's products and services to engage in, or support in any way, violations or abuses of human rights, including those involving illegal censorship, surveillance, detention, or excessive use of force. Users of Fortinet products are required to comply with the [Fortinet EULA](#) and report any suspected violations of the EULA via the procedures outlined in the [Fortinet Whistleblower Policy](#).



[www.fortinet.com](http://www.fortinet.com)

Copyright © 2024 Fortinet, Inc. All rights reserved. Fortinet®, FortiGate®, FortiCare® and FortiGuard®, and certain other marks are registered trademarks of Fortinet, Inc., and other Fortinet names herein may also be registered and/or common law trademarks of Fortinet. All other product or company names may be trademarks of their respective owners. Performance and other metrics contained herein were attained in internal lab tests under ideal conditions, and actual performance and other results may vary. Network variables, different network environments and other conditions may affect performance results. Nothing herein represents any binding commitment by Fortinet, and Fortinet disclaims all warranties, whether express or implied, except to the extent Fortinet enters a binding written contract, signed by Fortinet's Chief Legal Officer, with a purchaser that expressly warrants that the identified product will perform according to certain expressly-identified performance metrics and, in such event, only the specific performance metrics expressly identified in such binding written contract shall be binding on Fortinet. For absolute clarity, any such warranty will be limited to performance in the same ideal conditions as in Fortinet's internal lab tests. Fortinet disclaims in full any covenants, representations, and guarantees pursuant hereto, whether express or implied. Fortinet reserves the right to change, modify, transfer, or otherwise revise this publication without notice, and the most current version of the publication shall be applicable.